

## Laboratory Refrigerator



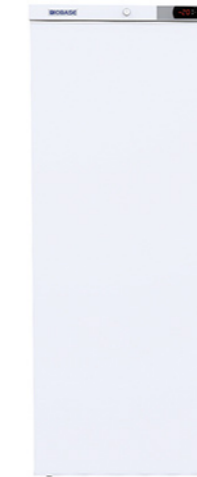
### Technical Parameters

Model	BPR-5V1500
Capacity	1500L
Temp. Range	2~8°C
Temp. Accuracy	0.1°C
Temp. Uniformity	≤3°C
Temp. Stability	±3°C
Recovery Time (Recover to 8°C in an ambient temp. of 32°C)	8min
Cooling Time (Cool down to 6°C in an ambient temp. of 32°C)	30min
Control System	Microprocessor control
Display	LED
Alarm	High and low temperature alarm, sensor failure alarm, power failure alarm, opening and closing abnormal alarm
Refrigeration Type	Air-cooling
Refrigerant	R134a/620g
Compressor	International famous brand compressor/1
Condenser & Evaporator	Copper tube aluminum plate
Defrost	Automatic defrost
Construction	Polyurethane cyclopentane insulation material
Material	Internal Material: Stainless steel External Material: Stainless steel
Door	Electrically heated glass door*3
Consumption	537W
Power Supply	AC 220V, 50/60Hz(Standard); 110V, 50/60Hz(Optional)
Casters	Yes
Shelf	12
Standard Accessory	/
Optional Accessory	Test hole, USB interface, RS485, printer, temperature recorder
Internal Size(W*D*H)	1680*640*1420mm
External Size(W*D*H)	1800*775*1965mm
Package Size(W*D*H)	1940*880*2035mm
Net Weight	245kg
Gross Weight	280kg

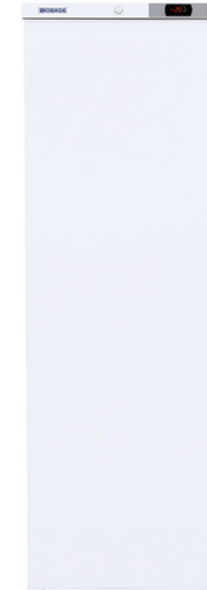
## -20/25°C Freezer(Economic Type)



BDF-20V40



BDF-25V230



BDF-25V300

### Technical Parameters

Model	BDF-20V40	BDF-25V230	BDF-25V300
Capacity	40L	230L	300L
Temp. Range	-10~-20°C	-10~-25°C	
Temp. Accuracy	1°C		
Temp. Uniformity	≤3°C		
Temp. Stability	≤3°C		
Control System	Microprocessor control		
Display	LED		
Alarm	High and low temperature alarm, thermostat fault alarm, door switch alarm		
Refrigeration Type	Direct-cooling		
Refrigerant	R600a/40g	R600a/64g	R600a/80g
Compressor	International famous brand compressor /1		
Condenser & Evaporator	Bundy tube, side plate type; aluminum tube, wound tube type	Bundy tube, side plate type; wire, tube type	
Defrost	Manual defrost		
Construction	Polyurethane cyclopentane foam		
Material	Internal Material: HIPS External Material: Precoated steel plate		
Door	1/Cyclopentane monolithic foam door		
Consumption	90W	110W	120W
Power Supply	AC 220V, 50Hz(Standard); 220V, 60Hz, 110V, 60Hz(Optional, external transformer)		
Casters	No		
Adjustable Shelves/ Drawer	1	6(Drawer)	8(Drawer)
Standard Accessory	Test hole, shelf		
Internal Size (W*D*H)	400*295*426mm	410*440*1330mm	410*440*1700mm
External Size (W*D*H)	480*460*585mm	595*600*1565mm	595*600*1965mm
Package Size (W*D*H)	520*520*730mm	640*660*1810mm	640*660*2180mm
Net Weight	18kg	60kg	77kg
Gross Weight	26kg	75kg	93kg